

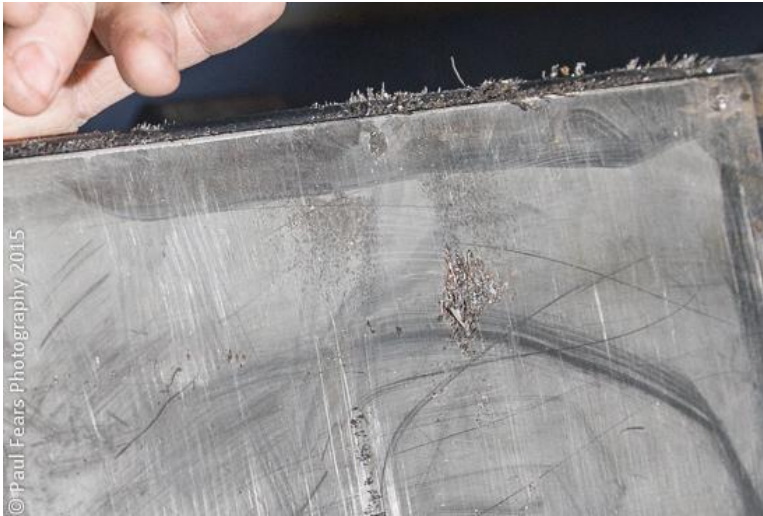


3 Types of Metal Found in Plastics Recycling

Metal is a major cause of equipment damage, production downtime and poor end product quality. So what types of metal can be found?

1. Fine metal shards and even dust

The metal found on the face of this [Plate Magnet](#) is quite fine and has been lifted up from conveyed material. Plate Magnets are also commonly installed in chutes.



2. Nuts, Bolts and Screws

This is a more typical example of metal contamination that tends to be introduced into the process from plant wear or during maintenance. These items were removed from the product stream using a [Magnetic Pulley](#).



3. A Spanner

An extreme, but not unusual, example. The damage that a tool such as a spanner can cause is huge in terms of cost and downtime. This was separated using a [Magnetic Pulley](#).



We are putting together a library of metal items that have been found in process lines and would welcome your feedback and photos. Please send us your stories to press@buntingeurope.com and we will add these to this news blog on our website.

For further details on the Bunting range of [Magnetic Separators](#) and [Metal Detectors](#) please contact our technical sales team on:

- sales@buntingeurope.com
- call us on 01442 875081
- [Send an enquiry via our website](#)